



**YU WAH STEEL (M) TRADING  
SDN. BHD. (725598-T)**

# VITRO<sup>®</sup> STEEL TRUSS

## Feature & Benefits

- Light-weight solution as compared to timber
- Strength and durability of steel
- Termite resistant
- Easily maintained with no post treatment required
- Environmentally friendly-fully recyclable



100% Recycle



Termite-proof, no need for chemicals



Light-weight



Environmentally Considerate



Long Lasting



Non-combustible  
Fire Resistant



No Staining



Precision Build



Economical



# VITRO<sup>®</sup> Steel Truss

## Light-weight Steel Truss System

Truss and Battens are cold-rolled sections manufactured from structure grade galvanized steel. It provides builders with a high quality, strong, dimensionally stable and light steel section which is ideal for roofing application. It's unique configuration delivers superior strength, stiffness and increased load capacity producing significant economies in both design and installations.

Steel Trusses is becoming the viable material for durable and versatile building construction better than timber. It's natural advantages are popular and desirable to the modern home buyer. For instance, it is remarkably resistant to the elements and will not be eaten by termites, borers or white ants.

Steel is one of the most recyclable material in the world. At the end of its service life steel frame can be 100% recycled to make new steel. Total structural protection from termites and borers when you build your home with steel truss and eliminate the risk.

### Advantages

- ↳ Strong, rigid & durable
- ↳ Light-weight & flexible
- ↳ Cost effective, conveniently carried & installed
- ↳ 100% non-combustible roof framing
- ↳ Safe, hygienic & environmental friendly
- ↳ Alternative decking or roofing materials selection
- ↳ Complete line of connections, clips & installation products.
- ↳ 100% prime steel & dimensionally stable
- ↳ Easy workability - can be cut, drilled, screwed & nailed with standard professional tools
- ↳ Corrossion protection - Yu Wah VITRO<sup>™</sup> section are protected against corrossion

### Warranty

VITRO<sup>™</sup> Steel Truss System fulfills International Standards in term of material specification and engineering design.

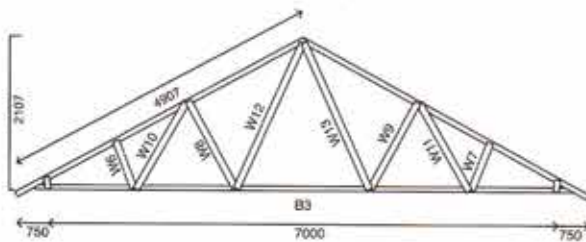
A performance warranty of 10 years\* will be issued upon client request and installation verified in compliance with the Quality Control Plan.

\*Warranty terms & conditions apply.

### Truss Material Summary

| Member Marking | Member Size | Qty | Lenght(mm) |
|----------------|-------------|-----|------------|
| T1             | MC7510      | 1   | 4907       |
| T2             | MC7510      | 1   | 4907       |
| B3             | MC7510      | 1   | 7000       |
| W4             | MC7508      | 1   | 150        |
| W5             | MC7508      | 1   | 150        |
| W6             | MC7508      | 1   | 740        |
| W7             | MC7508      | 1   | 740        |
| W8             | MC7508      | 1   | 1451       |
| W9             | MC7508      | 1   | 1451       |
| W10            | MC7508      | 1   | 1574       |
| W11            | MC7708      | 1   | 1574       |
| W12            | MC7508      | 1   | 2099       |
| W13            | MC7508      | 1   | 2099       |

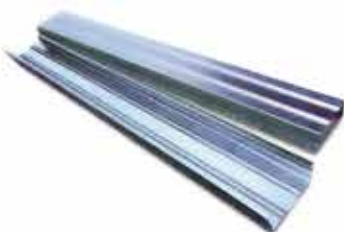
### Roof Truss Detail



## Specification

VITRO<sup>™</sup> Steel Truss System uses C-Sections - C7575, C7508 and C7510 for chords and webs. Hat section - MB32 and MB35 are used as roof battens and bracing. Self-drilling screws are used at the Joints and connections.

Light-weight Steel Truss C 70



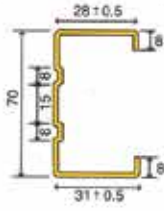
Light-weight Steel Truss C 75



Light-weight Steel Truss MB 35

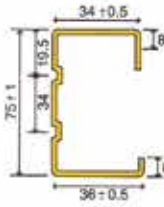


# Specifications



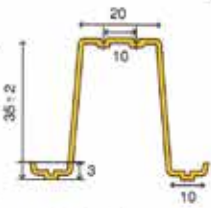
## C-Section 70

| Thickness (mm) | Area (mm <sup>2</sup> ) | Weight (kg/m) | I <sub>xx</sub> 10 <sup>4</sup> (mm <sup>4</sup> ) | I <sub>yy</sub> 10 <sup>4</sup> (mm <sup>4</sup> ) | Z <sub>xx</sub> 10 <sup>3</sup> (mm <sup>3</sup> ) | Z <sub>yy</sub> 10 <sup>3</sup> (mm <sup>3</sup> ) | R <sub>xx</sub> (mm) | R <sub>yy</sub> (mm) |
|----------------|-------------------------|---------------|--|--|--|--|----------------------|----------------------|
| 0.75           | 102.4                   | 0.89          | 7.776  | 1.023  | 2.178  | 0.461  | 27.6                 | 10.0                 |
| 0.80           | 109.1                   | 0.94          | 8.272  | 1.085  | 2.317  | 0.489  | 27.6                 | 10.0                 |
| 1.00           | 135.7                   | 1.18          | 10.226   | 1.328  | 2.864  | 0.598  | 27.6                 | 9.9                  |



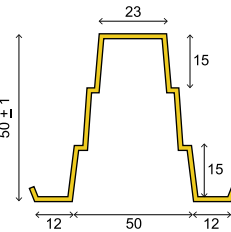
## C-Section 70

| Thickness (mm) | Area (mm <sup>2</sup> ) | Weight (kg/m) | I <sub>xx</sub> 10 <sup>4</sup> (mm <sup>4</sup> ) | I <sub>yy</sub> 10 <sup>4</sup> (mm <sup>4</sup> ) | Z <sub>xx</sub> 10 <sup>3</sup> (mm <sup>3</sup> ) | Z <sub>yy</sub> 10 <sup>3</sup> (mm <sup>3</sup> ) | R <sub>xx</sub> (mm) | R <sub>yy</sub> (mm) |
|----------------|-------------------------|---------------|--|--|--|--|----------------------|----------------------|
| 0.75           | 116.9                   | 0.99          | 10.187   | 2.012  | 2.738  | 0.756  | 29.5                 | 13.1                 |
| 0.80           | 124.6                   | 1.05          | 10.840   | 2.137  | 2.914  | 0.803  | 29.5                 | 13.1                 |
| 1.00           | 155.1                   | 1.30          | 13.421   | 2.628  | 3.608  | 0.988  | 29.4                 | 13.0                 |



## Batten MB35

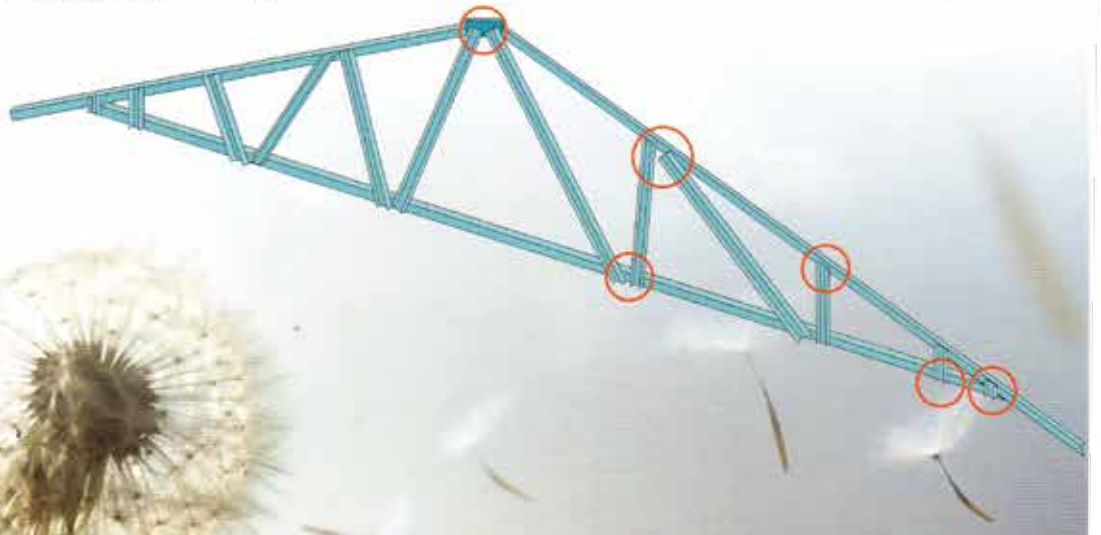
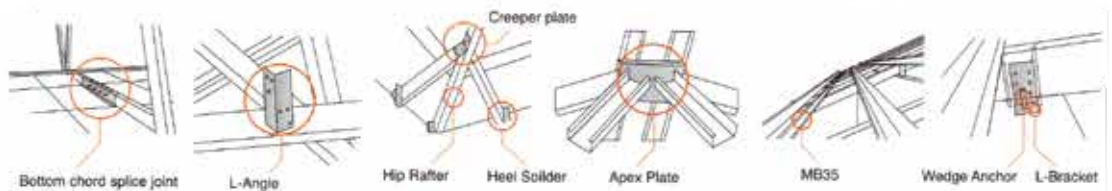
| Thickness (mm) | Area (mm <sup>2</sup> ) | Weight (kg/m) | I <sub>xx</sub> 10 <sup>4</sup> (mm <sup>4</sup> ) | I <sub>yy</sub> 10 <sup>4</sup> (mm <sup>4</sup> ) | Z <sub>xx</sub> 10 <sup>3</sup> (mm <sup>3</sup> ) | Z <sub>yy</sub> 10 <sup>3</sup> (mm <sup>3</sup> ) | R <sub>xx</sub> (mm) | R <sub>yy</sub> (mm) |
|----------------|-------------------------|---------------|--|--|--|--|----------------------|----------------------|
| 0.42           | 48.50                   | 0.45          | 0.829  | 1.678  | 0.512  | 0.533  | 12.7                 | 18.0                 |
| 0.48           | 55.40                   | 0.51          | 0.946  | 1.911  | 0.584  | 0.607  | 12.7                 | 18.0                 |



## Batten MB50

| Thickness (mm) | Area (mm <sup>2</sup> ) | Weight (kg/m) | I <sub>xx</sub> 10 <sup>4</sup> (mm <sup>4</sup> ) | I <sub>yy</sub> 10 <sup>4</sup> (mm <sup>4</sup> ) | Z <sub>xx</sub> 10 <sup>3</sup> (mm <sup>3</sup> ) | Z <sub>yy</sub> 10 <sup>3</sup> (mm <sup>3</sup> ) | R <sub>xx</sub> (mm) | R <sub>yy</sub> (mm) |
|----------------|-------------------------|---------------|--|--|--|--|----------------------|----------------------|
| 0.42           | 63.20                   | 0.57          | 1.584  | 3.034  | 0.765  | 0.786  | 15.8                 | 21.9                 |
| 0.48           | 72.10                   | 0.64          | 1.808  | 3.455  | 0.878  | 0.895  | 15.8                 | 21.9                 |

# Typical Truss Section Properties Connection

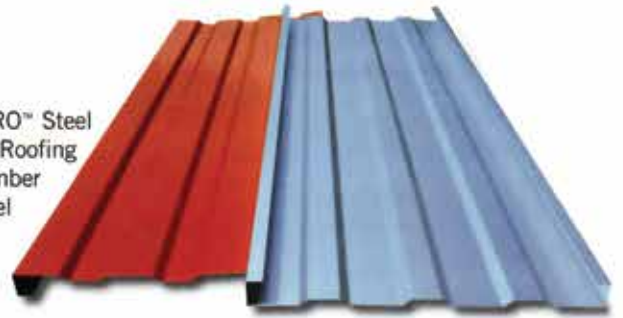


## Sample of Specification

VITRO™ Steel Truss System in light-weight high-tensile galvanised or zinz/aluminium alloy-coated steel. Truss details in accordance to manufacturer's drawing and instructions.

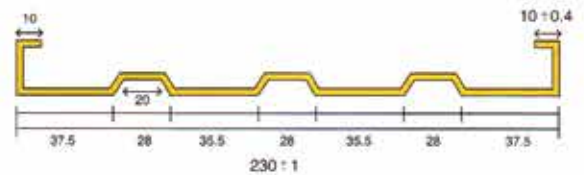
## VITRO® Metal Fascia Board

VITRO™ Metal Fascia Board can be incorporated with VITRO™ Steel Truss System and metal roofing to form a complete Metal Roofing System. It has innovative advantages over conventional timber fascia board. Apart from being environmental friendly, steel is readily available and is much more stable in cost as compared to other materials.

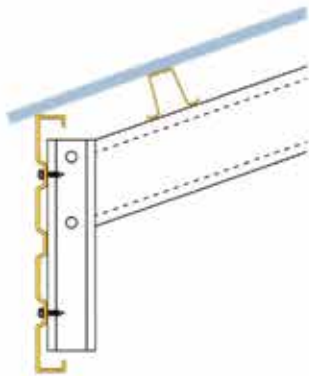


### Features & Benefits

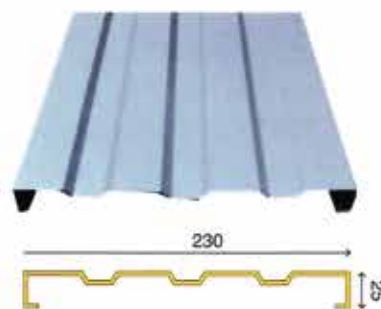
- ↳ Light-weight solution as compared to timber
- ↳ Strength and durability of steel
- ↳ Termite resistant
- ↳ Easily maintained with no post treatment required
- ↳ Corrosion resistant with substrate of Aluzinc/PPGI
- ↳ Additional protection with UV resistant clear coat for longer lasting effect of pattern
- ↳ Scratch resistant with special clear coat on surface
- ↳ Advanced flexographic paint technology for better durability as compared to traditional in system
- ↳ Environmentally friendly-fully recyclable



## Truss Accessories



L-Bracket



Screw-class 2 Standard



### Fascia Board

| Size | Available Thickness (mm) |         |
|------|--------------------------|---------|
|      | Colour                   | Aluzinc |
| 230  | *                        | 0.48    |
| 250  | *                        | 0.48    |
| 300  | *                        | 0.48    |

\* Colour : YK Red, Pearl Grey, Light Beige.

Anchor Bolt

